

The Murdock Company, Inc.



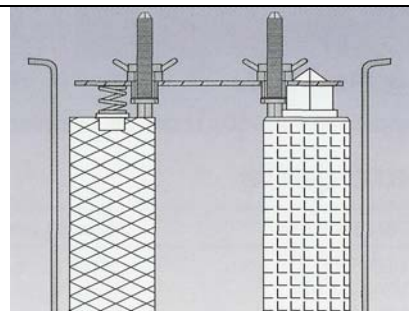
MicroExact™ 7MC SERIES

Seven Round Universal Filter Housings

Our seven round models are designed for flow rates to 168 GPM (45 M3/HR). “Universal” housings accept DOE, 222 and fin cartridges without the need for special adapters. Housings available in 304L or 316L stainless steel; band clamp or swing-bolt lid closures; 150 psi (10 bar) or 300 psi (20 bar) pressure ratings. Standard pipe fittings are 2” NPT, with flange, BSP, grooved and sanitary connections available. Electro-polishing or passivation can be provided by special order. Protective poly-coat over stainless steel is standard finish.

Features

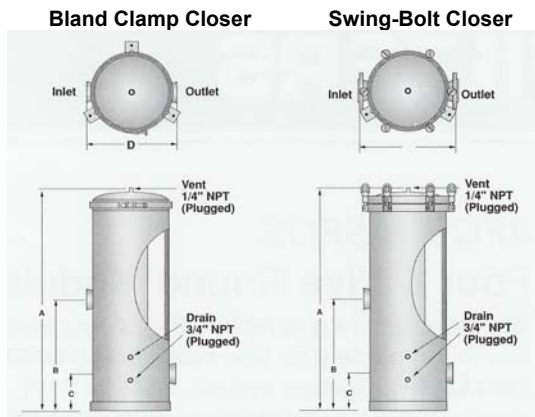
- Designed for industrial and commercial filtration applications
- Heavy-duty stainless steel construction for durability
- 304L and 316L stainless steel available
- Band clamp and swing-bolt closures for quick cartridge change-out
- Pipe fittings readily accessible for easy installation
- Knife edge seal provided at both ends of all DOE cartridges
- Designed to accept double open end, 222 and fin cartridges
- Adapters for 226 o-ring cartridges available
- Optional mounting tabs, legs & custom fittings available
- Adjustable top plate for more cartridge options



Specifications

Cartridge configuration	7 round / 10"	7 round / 20"	7 round / 30"	7 round / 40"
Cartridge lengths				
Product code, 304L w/ clamp lid	7MCA1	7MCA2	7MCA3	7MCA4
Product code, 304L w/ swing-bolt	7MCA1-SB	7MCA2-SB	7MCA3-SB	7MCA4-SB
Product code, 316L w/ clamp lid	7MCS1-316	7MCS2-316	7MCS3-316	7MCS4-316
Product code, 316L w/ swing-bolt	7MCS1-SB-316	7MCS2-SB-316	7MCS3-SB-316	7MCS4-SB-316
Flow rate, maximum GPM	42	84	126	168
Flow rate, maximum LPM	159	318	477	636
Flow rate, maximum 3M/HR	12	24	34	45
Standard cartridge length	10"	20"	30"	40"
Number of standard cartridges	7	7	7	7
Number 10" cartridge (butt seal)	7	14	21	28
Standard pipe size	2" NPT	2" NPT	2" NPT	2" NPT
Standard drain size	1/2" NPT	1/2" NPT	1/2" NPT	1/2" NPT
Pressure drop (vessel only, psi)	<1	<1	<1	<1
Standard pressure rating (psi/bar)	150-10	150-10	150-10	150-10
Temperature rating (max. F/C)*	300° / 149°	300° / 149°	300° / 149°	300° / 149°
Shipping weight (lbs.)	33	44	55	66

*Housing only. Flow rates for guidelines only. Actual flow rates are based on the fluid, viscosity, cartridge type, micron rating and other factors.



Seven round models (7MCA)

Dimensions Model	A	B	C	D
7MCA1 2" NPT	19.5"	7.4375"	2.75"	12.5"
7MCA1 2" flange	23.25"	7.4375"	2.75"	14.5"
7MCA2 2" NPT	29.75"	7.4375"	2.75"	12.5"
7MCA2 2" flange	38.25"	7.4375"	2.75"	14.5"
7MCA2 2" NPT	39.75"	7.4375"	2.75"	12.5"
7MCA3 2" flange	43.25"	7.4375"	2.75"	14.5"
7MCA3 2" NPT	49.57"	7.4375"	2.75"	12.5"
4MCA4 2" flange	53.25"	7.4375"	2.75"	14.5"

Note:

Information contained in this bulletin is believed to be reliable. It is the user responsibility to determine the suitability. Major factors are the fluid, temperature, pressure, solids content, cartridge type and micron rating.

Options



Mounting tabs



Flange fittings with legs



Sanitary fittings



Electro-polishing

Spare parts

Part Number	Description	Part Number	Description
A0017-B	Shell gasket, Buna-N	C014-S-12	Center rod, 1 high, 316 (two required)
A0017-EPR	Shell gasket, EPDM	C014-S-22	Center rod, 2 high, 316 (two required)
A0017-T	Shell gasket, Teflon	C014-S-32	Center rod, 3 high, 316 (two required)
A0017-V	Shell gasket, Viton	C014-S-42	Center rod, 4 high, 316 (two required)
A0008-S	Cover clamp	Options (Order code)	Description
H006	T-bolt for lid clamp	TABS	Mounting tabs (can be installed at site on 7's)
H007	T-handle for lid clamp	ML	Mounting legs (must order with flanges)
A0001-S	Head cover, 304	SD-1/2	1/2" sanitary drain, pair
A0001-S-316	Head cover, 316	SV-1/2	1/2" sanitary vent, each
H050-S	V-post, 1 high, 316	SF-2-316	2" sanitary fitting, 316 pair
H051-S	V-post, 2 high, 316	GF-2-316	2" groove fitting, 316 pair
H052-S	V-post, 3 high, 316	BSP-2-316	2" BSP, 316, pair
H053-S	V-post, 4 high, 316	FF-1.5-316	1-1/2" flange fittings, 316 pair (must order legs)
H011-S-316	1/2" drain plug, 316 (2 required)	FF-2-316	2" flange fittings, 316 pair (must order legs)
B103-S-316	1/4" vent plug, 316	FF-3-316	3" flange fittings, 316 pair (must order legs)
H019	Knob, 3/8" (for top plate, 2 required)	226 ADPT	226 cartridge adapters (require 7)
H019-W-S-316	Knob, 3/8 stainless (2 required)	SB-300-7	300 psi swing-bolt filter housing
A0007-S	Top plate, 7 round, 316	EP-7	Electro-polishing, 7 round models
		P-7	Passivation, 7 round

The Murdock Company, Inc.

936 Turret Ct Mundelein, IL 60060 / U.S.A.

Tel: 800-345-1956 or 847 566-0050 / Fax: 847-566-0057 / E-Mail: sales@murdockcompany.com / Web Site: www.murdockcompany.com